



تل خاکی: ردپای جامعه‌ای مس سنگی در ارتفاعات استان فارس، زاگرس جنوبی، ایران سامان حمزوی زرقانی، سیروس برفی، سمیرا جعفری و محسن زیدی

چکیده

در این مقاله کوتاه به معرفی محوطه‌ای نویافته به نام تل خاکی با بقایای استقرار عمده از دوره باکون پرداخته شده است. این محوطه اخیراً طی بررسی باستان‌شناختی شهرستان سرچهان واقع در شمال شرقی استان فارس و در بخش مرتفع زاگرس جنوبی شناسایی شده است. آثار فرهنگی به دست آمده از سطح این محوطه که بیشتر شامل قطعات سفال است، بیانگر چند دوره‌ای بودن آن از اواخر دوران نوسنگی تا دوران متاخر است. با این حال، پراکنش مقدار بسیار زیادی سفال نخودی منقوش مس‌سنگی مربوط به دوره باکون بیش از همه روی سطح و اطراف محوطه دیده می‌شود که احتمالاً بیانگر استقرار عمده این محوطه در دوره باکون بوده است. شاید یکی از دلایل اهمیت کشف این محوطه، قرارگیری آن در انتهای دره‌ای باریک و در کنار چشمه آبی در کوهپایه و دسترسی آسان به مراتع و چراگاه‌های اطراف دانست. به همین خاطر، در وهله اول شاید بتوان ماهیت استقرار در تل خاکی را مربوط به کوچروهای پیش از تاریخ در منطقه دانست. این منطقه و به خصوص دره‌ای که محل قرارگیری این محوطه است، امروزه قلمرو و اتراقگاه تابستانی عشایر منطقه است که هر سال چند ماه از سال را در این بخش سپری می‌کنند. با در نظر گرفتن موقعیت این محوطه در بستر گسترده‌تر پراکنش محوطه‌های دوره باکون در استان فارس و مناطق همجوار، پیشنهاد می‌شود که تل خاکی استقرار مربوط به جوامع کوچرو بوده است.

واژگان کلیدی: تل خاکی، استان فارس، مس سنگی، فرهنگ باکون، سفال.

<https://doi.org/10.22034/JINM.2024.2016568.1080>
© 2025 Iran National Museum. All rights reserved

Tol-e Khaki: Tracing the Footsteps of a Chalcolithic Community in the highlands of Fars Province, Southern Zagros Mountains, Iran

Saman Hamzavi Zarghani^a, Cyrus Barfi^b, Samira Jafari^c, Mohsen Zeidi^d

Abstract

In this brief paper, we present a recently discovered Bakun site called Tol-e Khaki, located in the highlands of Fars Province. The site was discovered during an archaeological survey conducted in Sarchehan County, located in the northeast of Fars Province. The ceramics found on the surface of the site represent deposits from various cultures dating from the late Neolithic period onwards. The presence of numerous Chalcolithic painted black-on-buff ceramics scattered across the site indicates that Tol-e Khaki was primarily occupied during the Chalcolithic Bakun period. The significance of this isolated site lies in its location at the end of a small, enclosed narrow valley near a water source on the foothills of high mountains, providing access to pastures and other resources. These features draw attention to the possible nomadic nature of this settlement. This area falls within the territory of the current nomadic summer pastures, where nomads set up their tents near and around Tol-e Khaki. By placing this site in the wider context of the distribution of Chalcolithic sites known as Bakun in Fars Province and beyond, we propose that Tol-e Khaki could have been a nomadic settlement.*

Keywords: Tol-e Khaki, Fars Province, Chalcolithic, Bakun culture, Ceramic.

a. Department of Early Prehistory and Quaternary Ecology, University of Tübingen, Germany

b. Bishapur Archaeological Research Project, Kazerun, Iran

c. Independent Researcher, Shiraz, Iran

d. Department of Early Prehistory and Quaternary Ecology, University of Tübingen, Germany, Senckenberg Centre for Human Evolution and Palaeoenvironment at University of Tübingen, Germany

*. This paper is dedicated to Patty J. Watson

Introduction

The fifth millennium BC in Iran marks the emergence of widespread ceramic traditions, which replaced the previously localized ceramic traditions of human communities during the Neolithic period. While the western Central Zagros region experienced the Black-on-buff tradition, the Southern Zagros region in Fars Province revealed the Bakun culture (Alizadeh, *et al.* 2006; Henrickson 1983; Renette and Mohammadi Ghasrian 2020; Tonoike 2009). The Southern Zagros, which stretches from the Strait of Hormuz to Khuzestan, is naturally linked to the Mesopotamian lowlands through a series of mountain passes. During the Chalcolithic period, this region had a distinct cultural identity compared to the Northern and Central Zagros. This region is often mentioned in connection with the Susiana sequence in Khuzestan (Renette and Mohammadi Ghasrian 2020). The Southern Zagros had its own unique cultural tradition during the Chalcolithic period (5200-4100 BC). This period began with the Black-on-buff Bakun tradition in Southern Zagros (Alizadeh, *et al.* 2006; Miki 2022), which coincided with the Ubaid period in Mesopotamia, the Middle-Late Susiana period in Khuzestan, and the Transitional Chalcolithic in the Iranian Central Plateau (Carter and Philip 2010; Delougaz and Kantor 1996; Miki 2022; Vidale, *et al.* 2018). Black-on-buff ceramics were not only found in the Southern Zagros region, but also in Mesopotamia and Khuzestan (Miki 2022; Renette and Mohammadi Ghasrian 2020; Wong 2008). The Bakun tradition in Fars Province went through different stages, including Early, Middle, and Late phases and through time became more widespread geographically (Alizadeh, *et al.* 2006). It is recognized as the initial stage of socio-economic complexity in village-based communities (Alizadeh, *et al.* 2006; Sumner 1994; Voigt and Dyson 1992). The famous Black-on-buff Bakun ceramics in Fars Province were initially described by Herzfeld (1929; 1932) and later by Schmidt (1937). Bakun ceramics were discovered at the twin mounds of Tal-e Bakun A and B near Marvdasht, on the Persepolis Plain, and were subsequently named after the excavations

conducted at these sites. Both sites have been excavated multiple times by various teams since the early 20th century (cf. Alizadeh, *et al.* 2006; Egami and Masuda 1962; Langsdorff and McCown 1942). Bakun A is dated to the Middle and Late Chalcolithic periods, while Bakun B is attributed to the Late Neolithic to Early Chalcolithic periods.

In the context of various archaeological expeditions in Fars and the surrounding regions, Stein (1936; 1937) and Vanden Berghe (1952; 1954) also documented comparable Chalcolithic sites featuring Bakun Black-on-buff painted ceramics. This pottery has been reported and described in several excavation and survey projects, such as Tal-e Gap in Persepolis Plain (Egami and Sono 1962), Tal-e Nokhodi near Pasargad (Goff 1963; Goff 1964; Sami 1971), Shiraz and Persepolis plains (Gotch 1968; Gotch 1969), Tal-e Khari in Pasargad (Sami 1971), Fasa and Darab Plains (de Miroshedji 1972), Tal-e Jari A (Egami, *et al.* 1977), and Arsanjan region (Ikeda 1979). In the late 1960s, William M. Sumner conducted systematic archaeological surveys of the Kur River Basin (KRB) in Marvdasht. Within three field seasons, he documented 145 sites with Bakun painted ceramics, among other sites (Sumner 1972: 39). Later, in his synthesis of early settlements in Fars Province, Sumner (Sumner 1977: 300) reported a total of 246 sites with Bakun painted ceramic. This was achieved by integrating the survey data from various survey projects conducted in the region. Continued fieldwork in the high intermountain valleys and plains of Fars Province and neighboring regions over the last decade (e.g., Azizi Kharanaghi, *et al.* 2013; Bernbeck, *et al.* 2006; Hamzavi and Zeidi 2016; Helwing, *et al.* 2010; Helwing, *et al.* 2012; Helwing and Seyedin 2010; Potts and Roustaei 2006; Sardari, *et al.* 2011; Sardary and Taheri 2015; Zeidi 2017) has revealed the identification of more Bakun and Bakun-related localities with painted Black-on-buff ceramics. This has also provided a broader set of data and enhanced our understanding of the region during the Chalcolithic period (Fig. 1).

These sites are distributed in different environmental settings and zones of a vast ge-

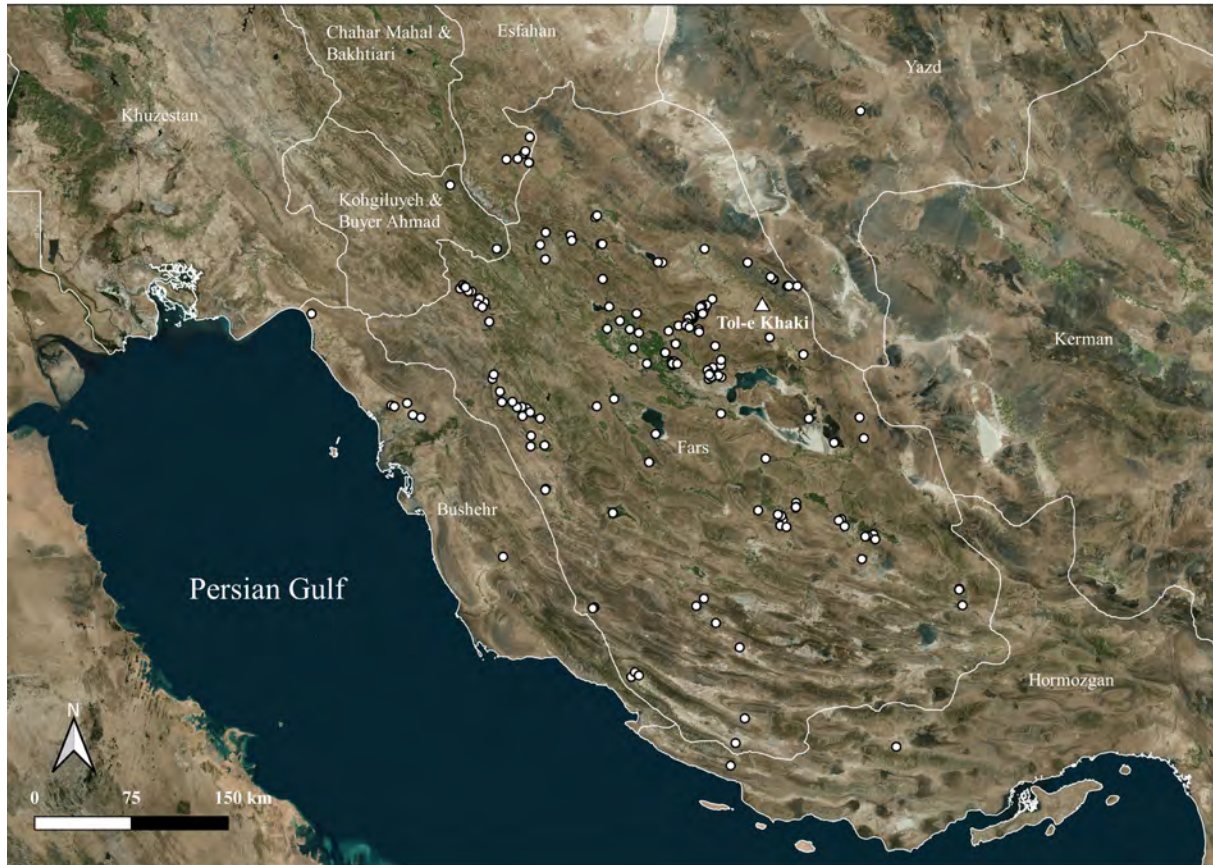


Fig. 1. Distribution map of Bakun and Bakun-related sites in Fars Province and neighboring regions (prepared by M. Zeidi).

ographical area in southern Zagros. Bakun painted ceramics have been recorded at different site settings, such as tells, cave/rock shelters, cemeteries, and open-air surface scatter or flat sites. However, the empty places or isolated Bakun sites in Fars Province and neighboring regions such as Bushehr and Hormozgan (cf. Fig. 1) do not indicate absence or less-occupied areas, but rather a lack of data and insufficient information from these regions. This is due to the intensive and repeated archaeological surveys in specific regions, such as KRB, which have more documented sites. In contrast, there are fewer or no archaeological investigations in other regions, resulting in a few or no recorded sites. The onset of the fifth millennium B.C. in Fars is marked by the emergence of sites with the new style of Bakun painted Black-on-buff ceramics. This style is regarded as a significant cultural phase, as it coincides with the development and formation of complex communities in the region. The Bakun period was an era of fundamental economic, social, political, and cultural development (see Alizadeh, *et al.*

2006; Askari Chaverdi, *et al.* 2008; Sardari, *et al.* 2011; Sumner 2003). Except for a few radiometric dating, however, the chronology of the Bakun period is not well defined yet, and it remains a matter of debate. On the other hand, the origin and nature of Bakun and Bakun-related settlements are highly unknown, and the growing number of Chalcolithic sites in Fars Province and its surrounding regions raises further questions and calls for additional investigations. Here, we will examine the distribution of Bakun sites in Fars Province and beyond. Additionally, this study introduces the surface collection of Bakun ceramics from Tol-e Khaki in Sarchehan County, located in the northeast of Fars Province.

Research background

The archaeology of Fars Province has been investigated since the late 1920s. Despite this extensive history, the main focus has primarily been on the KRB, resulting in other areas of the province receiving less attention. The exploration of the KRB was initially conducted

by Stein in 1934 (Stein 1936), but the first systematic surveys in this region were carried out by Vanden Berghe (1952; 1954). From 1967 to 1969, William Sumner (1972) conducted systematic surveys in the KRB. Afterwards, many archaeological investigations were carried out by various archaeological teams in the KRB, as well as in other regions of the province. For example, the Shiraz Plain was surveyed by Gotch (1968; 1969). De Miroschedji (1972) conducted surveys in the plains of Darab and Fasa, while Ikeda (1979) investigated Arsanjan. Some other important archaeological investigations in various parts of Fars Province were also carried out by Iranian and foreign teams after the Islamic Revolution in 1979. These investigations have shed light on the cultural history of the province (e.g. Alizadeh, *et al.* 2004; Alizadeh, *et al.* 2006; Azizi Kharanaghi, *et al.* 2013; Hamzavi and Zeidi 2016; Khanipour, *et al.* 2018; Khanipour, *et al.* 2019; Nishiaki, *et al.* 2013; Pollock, *et al.* 2010; Potts and Roustaei 2006; Tsuneki and Zeidi 2008; Tsuneki, *et al.* 2007; Zeidi, *et al.* 2016). Regarding the area under discussion in this paper, in April 1934 and during his last days of the journey in Fars, Aurel Stein (1936: 206-222) traveled along the eastern margins of the province and reached the Bavanat district. Besides other localities, he reported several sites with Chalcolithic painted ceramics along the Bavanat stream valley and conducted test pits at some of the sites (*ibid.*, 210-211). Before his return to Shiraz, he also visited Dehbid, where he excavated Tal-i-Bahram or Tepe Dehbid as a site with characteristic Chalcolithic period (*ibid.*, 213-217). He returned to Shiraz, taking the ancient route along Pasargad, Tang-e Bolaghi, Istakhr, and Persepolis. Several other Chalcolithic sites, such as Tal-e Se Asiab, Do Tulan, an unknown site in Tang-e Bolaghi, and Tepe Rahmatabad, were visited by Stein (*ibid.*, 217-221), and he conducted test excavations at some of them. After a long research gap, Khanipour and colleagues (2019) conducted a systematic archaeological survey of the Bavanat River Basin in north-eastern Fars and recorded numerous localities. Among these, there are eight Bakun sites (*ibid.*: 58), some of which were previously reported

and examined by Stein in 1934 (Stein 1936: 210-211). Although Fars Province has a long history of archaeological research, there are still many regions that have not been systematically investigated. Sarchehan County, located in the highlands of northeast Fars Province, falls within the category of underrepresented areas. Our knowledge about the prehistory of this region is very limited. However, recent archaeological inspections of the region have shed new light on the prehistoric human occupation of the region. A high mountain range with a northwest-southeast direction divided the Bavanat district into northern and southern valley systems (Fig. 2). Although the northern part was investigated first by Stein (1936) and more recently by Khanipour and colleagues (2019), the southern part, where Tol-e Khaki was discovered, remained archaeologically unvisited and unknown until recently. In the summer of 2017, two of the authors (CB & SHZ) conducted an archaeological survey in Bavanat County to document all archaeological sites. Regardless of their cultural remains, all sites were recorded during the survey. Tol-e Khaki was the only Chalcolithic site discovered during this survey.

Regional setting

The newly established Sarchehan County is an intermountain plain with a mean elevation of 2100 meters above sea level. It is located north-east of Fars Province in southern Iran (Fig. 2). Sarchehan is bordered to the south by Arsanjan, to the north by Bavanat, to the west by Pasargad and Khorrambid, and to the east by Khatam County in Yazd Province. Following the general trends of the Zagros Mountains, the Sarchehan plain stretches from northwest to southeast, spanning approximately 70 kilometers in length. The widest part of the plain measures about 10 kilometers. The region has a hilly landscape, with cold and dry weather in winter and a temperate climate in summer. The major water sources of the region are mainly permanent springs, which are mostly dry now as a result of droughts and overuse of groundwater during the last few decades. In the summer, runoff from the winter's snowfall forms seasonal streams, which provide a temporary

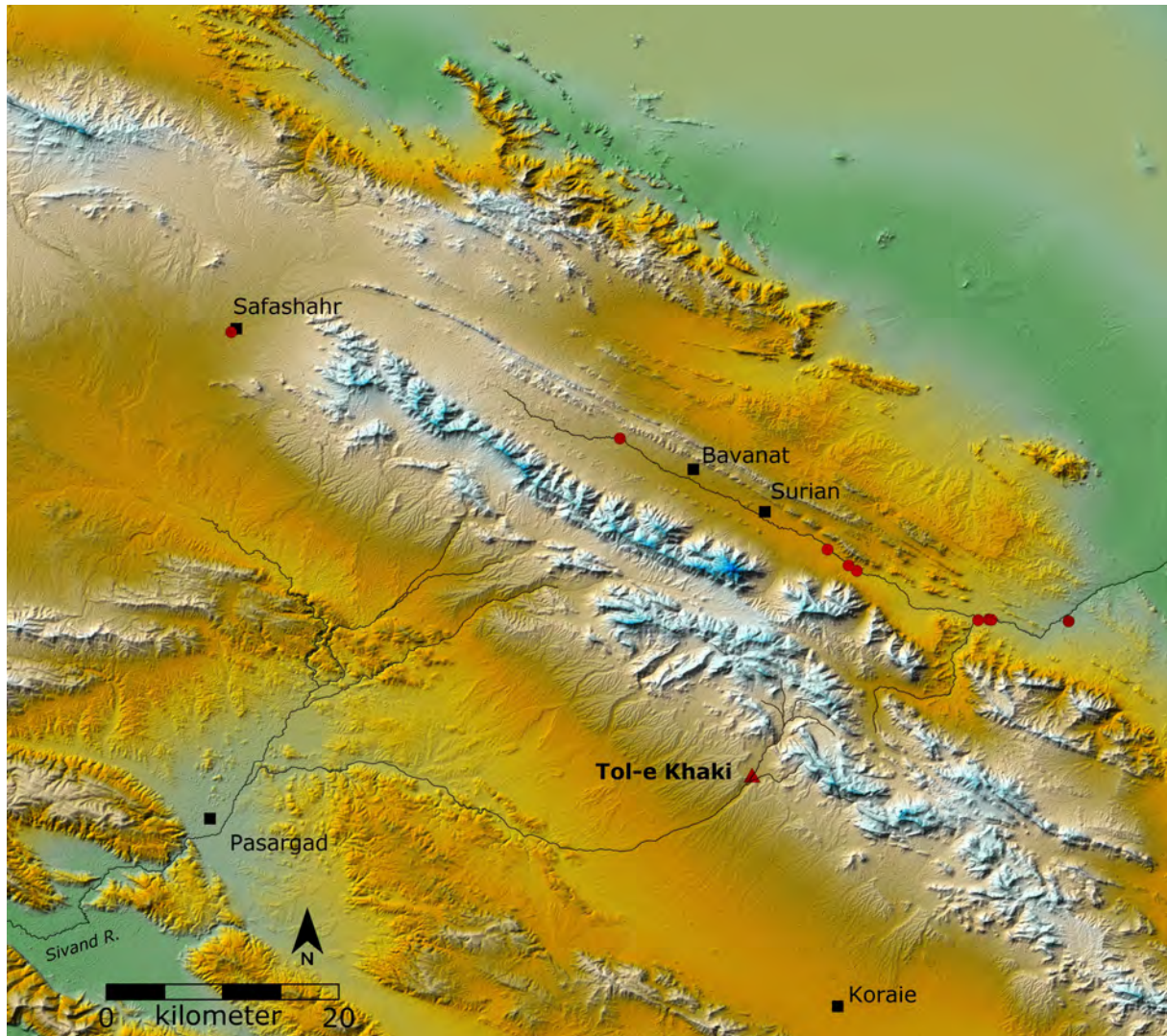


Fig. 2. Topographic map of Sarchehan County and the surrounding regions is indicating the location of Tol-e Khaki and other Bakun sites in Bavanat (map: M. Zeidi).

water source for nomads and farmers. Currently, Qanat (Kariz) serves as one of the primary sources for transporting underground water to the populated areas and cultivated fields of the region. The alluvial-pluvial sediments of the plain are deposited from the erosion of highlands by the seasonal streams and floodwaters. The region under study is located in the territory of the Khamseh nomadic tribes, where they occupy the stream valleys and pitch their tents during the summer.

Description of the site

Tol-e Khaki is located approximately 23 kilometers northwest of the city of Korai, with an elevation of 2315 meters above sea level. This archaeological site, with its conical shape, rises to a height of about 12 meters above the sur-

rounding plain and covers an area of approximately one hectare. The mound is situated at the mouth of a small enclosed basin in the hilly landscape, covering an area of 5.2 km². This is where the summer pastures and nomadic campsites of the Khamseh mobile pastoralists of the region are located (see Figs. 4 – 6). Several springs originating from the surrounding mountains form a small stream with a north-east-southwest direction. This stream passes through the western part of the site and serves as the main source of water in this basin. The site is strategically located on the bank of the stream, making it the only source of water in the area. It is situated in front of the narrow stream valley, allowing it to control access to the summer pastures and limited flatlands of the Jowakan basin (Fig. 3). The site has been

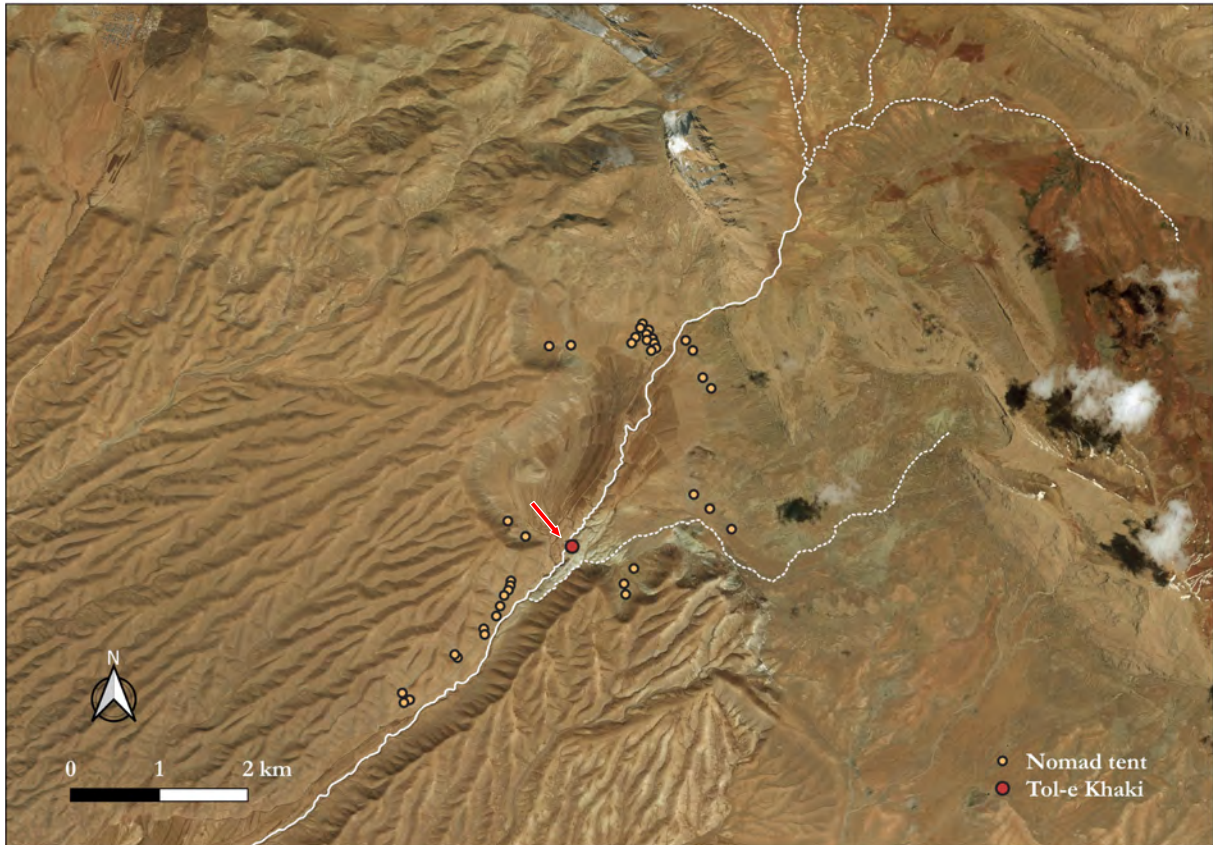


Fig. 3. Satellite image is depicting the location of Tol-e Khaki, along with the surrounding nomadic campsites (prepared by M. Zeidi).



Fig. 4. An overview of the site, looking towards the north. (Photo: S. Hamzavi Zarghani).



Fig. 5. Tol-e Khaki looking toward the east. (Photo: S. Hamzavi Zarghani).



Fig. 6. An overview of the stream valley, looking towards the south. (Photo: S. Hamzavi Zarghani).

looted and damaged in several directions, and parts have been scraped off by heavy equipment in the north and south, causing the exposure of archaeological layers with large amounts of ceramic fragments. In the eastern part of the site, some ephemeral structures and stone alignments made by drystone, created by the current nomads, are still visible (Figs. 7-8).

Surface collection of Bakun ceramics

Based on site morphology and observed surface finds, the survey team decided to conduct a systematic survey of the site. Due to time constraints, the site was divided into four sections in cardinal directions, and each section was randomly sampled. A total of 227 pottery fragments and seven chipped lithics were collected from the surface. The surface collection can be divided into two main groups: prehistoric and historical ceramics. In total, a collection of 153 prehistoric pottery fragments was collected, with 98 painted Bakun ceramics among them. Both the Middle (Bakun B2, Gap) and Late (Bakun A) phases of the Bakun period, featuring painted ceramics, are represented in the surface collection. Our collected Bakun ceramics from Tol-e Khaki show similarities with

previously studied sites in KRB, such as Tal-e Bakun A, B, and Tal-e Gap (Figs. 9-10).

Concluding remarks

The Zagros Mountains are characterized by high intermountain valleys and plains that provide unique opportunities for the establishment of human settlements. They have also served as routes of communication since prehistory (Helwing 2005: 40). The Iranian Plateau, in general, and the Zagros Mountains, specifically, have long been inhabited by pastoral nomads. Several archaeological studies have proven this statement (e.g. Abdi 2003; Abdi, *et al.* 2002; Alizadeh 2008; Alizadeh, *et al.* 2004; Azadi 2015; Esmaili Jelodar 2009; Haerinck and Overlaet 1996; Hole 1974; Hole 1975; Mortensen and Mortensen 1989; Shirazi, *et al.* 2015; Yamauchi and Nishiyama 2008; Zagarell 1982; Zeidi, *et al.* 2016). Current pastoral nomads in Fars Province typically travel long distances between their winter and summer pastures. For instance, the distance between the summer and winter pastures of Qashqai tribes can exceed 500 kilometers. The Qashqai Confederacy is the largest group of tent-dwelling pastoral nomads in Iran and occupies the central and northern regions



Fig. 7. The remains of ephemeral dry stone architecture belonging to the current nomads can be found on the eastern side of the site. (Photo: S. Hamzavi Zarghani).



Fig. 8. The remains of the tent dwellings of the current nomads can be found on the eastern side of the site. (Photo: S. Hamzavi Zarghani).

of the Fars Province (Beck 1986; Beck 1991). Their summer pastures are located in high altitudes of northern Fars, where small intermountain valleys and plains exist. In the agriculturally marginal zone, various tribal groups sparsely occupy the region. Usually, the tribal chiefs used to settle in logistically secured and protected places in these valleys, both for summer and winter pastures, surrounded by tents (Alizadeh, *et al.* 2006: 130). Here, they have semi-permanent and permanent residential areas with solid architecture. Ruined remnants of these places can be seen in both summer and winter territories (Beck 1986: 187). Every Qashqai tribe has its migration route or tribal road. These routes and passages are specific and unique for each tribe (Barth 1961; Safinejad 1995; Shahbazi 1987). Along the entire migration routes of modern nomads, many small temporary nomadic stopping points that are used for short breaks during their seasonal round can be found. Tol-e Khaki is located in one of the current Sarhad or summer pastures of Ashrafi and Ghani tribes of the Khamseh



Fig. 9. A selection of Bakun painted ceramics from the site (prepared by M. Zeidi).

Confederacy. Their summer pasture is the stream valley near Tol-e Khaki, which they call Jowakan, and their winter pasture is Jabri Shah-e Gheyb in Larestan County of southern Fars. Tol-e Khaki is located in an area with a hilly landscape and limited potential for agriculture, suggesting occupation by a group of mobile pastoralists, as it is today. With its harsh winter climate, the inhabitants of Bakun period in the Jowakan basin may have occupied this place during the spring and summer to utilize the available pastures and water sources. As suggested by Alizadeh (Alizadeh 2003; Alizadeh, *et al.* 2006), since there is no known precedent for painted Bakun ware in Fars, it is most likely that they were introduced into Fars by the mobile pastoralist societies of the region who moved between highland Fars and lowland Susiana. The sedentarization of the southern Zagros by these groups of people could have played a role in this introduction. Although it is beyond the scope of this study, and no direct archaeological data support this suggestion, it can be assumed that there was a nomadic com-



Fig. 10. A selection of Bakun painted ceramics from the site (prepared by M. Zeidi).

ponent in societies in southern Zagros during at least part of the fifth millennium BC. However, much more data is required. Only through systematic excavations accompanied by detailed bio-archaeological analysis at Tol-e Khaki can evidence for the social complexity and nature of occupation at the site be obtained.

Acknowledgments

We would like to express our gratitude to Dr. Mosayeb Amiri, the head of ICHTO in Fars for funding the survey project. We also thank Mr. Mohammad Hasan Paknezhad, Mr. Reza Nowruzi, Mr. Hosein Poor Asad, and Dr. Susan Pollock for their generous support. Additionally, we extend our thanks to Ms. Somaie Hosein Zadeh for her valuable contribution in illustrating the ceramics.

Iranian Cultural Heritage, Handicrafts and Tourism Organization of Fars Province funded the survey project. The author declares no competing interests.

References

- Abdi, Kamyar
2003 “The Early Development of Pastoralism in the Central Zagros Mountains”. *Journal of World Prehistory* 17(4): 395-448.
- Abdi, Kamyar, Gabriel Nokandeh, Ali Azadi, Fereydoun Biglari, Saman Heydari, Dariush Farmani, Akbar Rezaei and Marjan Mashkour
2002 “Tuwah Khoshkeh: A Middle Chalcolithic Mobile Pastoralist Camp-Site in the Islamabad Plain, West Central Zagros Mountains, Iran”. *Iran* 40(1): 43-74.
- Alizadeh, Abbas
2003 *Some Observations Based on the Nomadic Character of Fars Prehistoric Cultural Development. In Yeki bud, yeki nabud: essays on the archaeology of Iran in honor of William M. Sumner.* N.F. Miller and K. Abdi (eds.), Pp. 83-97. Los Angeles: The Cotsen Institute of Archaeology, University of California.
- 2008 “Archaeology and the Question of Mobile Pastoralism in Late Prehistory”. In *The Archaeology of Mobility: Old World and New World Nomadism* H. Barnard and W. Wendrich, eds. Pp. 78-114. Los Angeles: Cotsen Institute of Archaeology.
- Alizadeh, Abbas Mohsen Zeidi, Alireza Askari, Lili Niakan and Ali Atabaki
2004 “Iranian Prehistoric Project: Excavation at Tall-e Bakun A and B, Jari A and B, And Mushki: Reconstruction of the Iranian Prehistoric Environment in Marvdasht”. *Oriental Institute Annual Report 2003-2004*: 94-105.
- Alizadeh, Abbas
2006 *The Origins of State Organizations in Prehistoric Highland Fars, Southern Iran: Excavations at Tall-e Bakun.* Chicago: Oriental Institute of the University of Chicago in association with the Iranian Cultural Heritage and Tourism Organization.
- Askari Chaverdi, Alireza; A. Petrie Cameron and Helen Taylor
2008 “Early Villages on the Persian Gulf Littoral: Revisiting Tol-e Pir and the Galehdār Valley”. *Iran* 46(1):21-42.
- Azadi, Ahmad
2015 “A Late Bronze/Early Iron Age nomadic site (KR 385) in the Bakhtiari Highlands, south-west Iran”. <http://journal.antiquity.ac.uk/projgall/azadi347>.
- Azariyan, M. and Y. Zekavat-zadeh
2021 “Evidence of Sassanian fire temple in the hinterland of Persian Gulf”. In J. Nokandeh, A. Dashtizadeh and O. Ghafoori (eds.), pp. 223-234, *The Persian Gulf, an Archaeological Perspective.* Tehran, National Museum of Tehran. (in Farsi)
- Azizi Kharanaghi, Hossein, Hassan Fazeli Nashli and Yoshihiro Nishiaki
2013 “Tepe Rahmatabad: A Pre-Pottery and Pottery Neolithic Site in Fars Province”. In *The neolithisation of Iran: the formation of new societies.* R. Matthews and H. Fazeli Nashli (eds.), Pp. 108-123. Oxford: Oxbow Books.
- Azizi Kharanaqi, M. H.; N. Ebrahimi and M. Azariyan
2021 “Bakun Sites at the northern littoral of the Persian Gulf (Bushehr Province)”. In J. Nokandeh, A. Dashtizadeh and O. Ghafoori (eds.), pp. 63-78, *The Persian Gulf, an Archaeological Perspective.* Tehran, National Museum of Tehran. (in Farsi)
- Barth, Fredrik
1961 *Nomads of South Persia, The Basseri Tribe of the Khamseh confederacy.* Boston: Little Brown.
- Beck, Loïsn
1986 *The Qashqa’I of Iran.* New Haven: Yale University Press.
1991 *Nomad: A Year in the life of a Qashqa’i Tribesman in Iran.* Berkeley: University of California Press.
- Bernbeck, Reinhard, Hassan Fazeli Nashli and Susan Pollock
2006 “Life in a 5th millennium village: excavation at Rahmatabad, *Near Eastern Archaeology* 68 (3):94-105.

- Carter, Robert A. and Graham Philip
2010 *Beyond the Ubaid: Transformation and Integration in the Late Prehistoric Societies of the Middle East*. Chicago: The Oriental Institute of the University of Chicago.
- de Miroschedji, Pierre
1972 "Prospections archéologiques dans les vallées de Fasa et de Darab (rapport préliminaire)". In *Proceedings of the 1st Annual Symposium of Archaeological Research in Iran*. F. Bagherzadeh (ed.), Pp. 1-13. Tehran: Ministry of Culture and Arts, National Research Centre for History of Art and Archaeology.
- Delougaz, Pinhas and Helene J. Kantor
1996 *Chogha Mish I: The First Five Seasons of Excavations, 1961-1971*, Chicago: The Oriental Institute of the University of Chicago.
- Egami, Namio and Seiichi Masuda
1962 *Marv-Dasht I, The excavations at Tall-i-Bakun in 1956*. Tokyo: University of Tokyo.
- Egami, Namio and Toshihiko Sono
1962 *Marv-Dasht II: The Excavation at Tall-i-Gap 1959*. Tokyo: Institute of Oriental Culture of the University of Tokyo.
- Egami, Namio, Sei-ichi Masuda and Takeshi Gotoh
1977 "Tāl-i Jarri A: A preliminary report of the excavations in Marv Dasht, 1961 and 1971". *Orient* 8:1-14.
- Esmaeili Jelodar, Mohammad Esmail
2009 *Report on salvage excavation in the area of Kuhrang Dam and its third tunnel, 2009*. Tehran: Iranian Cultural Heritage, Handicrafts and Tourism Organization, and Iranian Ministry of Power.
- Goff, Clare
1963 "Excavations at Tall-i-Nokhodi". *Iran* 1:43-70.
1964 "Excavations at Tall-i-Nokhodi, 1962". *Iran* 2:41-52.
- Gotch, Paul
1968 "A Survey of the Persepolis Plain and Shiraz area". *Iran* 6:168-169.
1969 "The Persepolis Plain and Shiraz: Field Survey 2". *Iran* 7:190-192.
- Haerinck, Ernie and Bruno Overlaet
1996 *The Chalcolithic Period, Parchinah and Hakalan: Belgian Archaeological Mission in Iran: the Excavations in Luristan, Pusht-i Kuh (1965-1979)*. Brussels: The Gent University and the Royal Museums of Art and History.
- Hamzavi, Saman and Mohsen Zeidi
2016 "Tappeh Poustchi: A Prehistoric Site in Shiraz, Fars Province, Iran". In *The Neolithic of the Iranian Plateau: recent research*. K. Roustaei and M. Mashkour (eds.), Pp. 227-239. Berlin: Ex Oriente.
- Helwing, Barbara
2005 "Early Complexity in Highland Iran: Recent Archaeological Research into the Chalcolithic of Iran". *Turkish Academy of Sciences Journal of Archaeology* 8:39-60.
- Helwing, Barbara and Mojgan Seyedin
2010 "Bakun-Period Sites in Darre-ye Bolāghi, Fars". In *Beyond the Ubaid: transformation and integration in the late prehistoric societies of the Middle East*. R.A. Carter and G. Philip (eds.), Pp. 277-292, Vol. no 63. Chicago, Illinois: Oriental Institute of the University of Chicago.
- Helwing, Barbara, Mohsen Makki and Mojgan Seyedin
2010 "Prehistoric settlement patterns in Darre-ye Bolaghi, Fars, Iran: Results of archaeological and geoarchaeological fieldwork". In *Proceedings of the 6th International Congress of the Archaeology of the Ancient Near East: 5 May - 10 May 2008, "Sapienza", Università di Roma*. P. Matthiae, F. Pinnock, L. Nigro, N. Marchetti, and L. Romano (eds.), Pp. 233-247. Wiesbaden: Harrassowitz.
- Helwing, Barbara, Kirsi O. Lorentz and Mojgan Seyedin
2012 "The Dead in 5th Millennium BC Darre-ye Bolaghi: First Evidence on Bakun-Period Burial Rites from Southern Iran". In *Nāmvarnāmeḥ Papers in Honour of Massoud Azarnoush*. H. Fahimi and K. Alizadeh, (eds.), Pp. 69-78. Tehran: IranNegar.
- Henrickson, Elizabeth Francis Fabian
1983 *Ceramic styles and cultural interaction in the early and middle Chalcolithic of the central Zagros, Iran*, University of Toronto.
- Herzfeld, Ernst
1929 "Prehistoric Persia I: A Neolithic Settlement at Persepolis, Remarkable New Discoveries". *Illustrated London News* 85:892-893.
1932 *Iranische Denkmäler*. Berlin: Reimer.
- Hole, Frank
1974 "Tepe Tūlā'i: An Early Campsite in Khuzistan, Iran". *Paléorient* 2:219-242.
1975 "The Sondage at Tappeh Tula'i". In *Proceedings of the Third Annual Symposium on Archaeological Research in Iran*. F. Bagherzadeh (ed.), Pp. 63-76. Tehran: Iranian Center for Archaeological Research.
- Ikeda, Jiro
1979 *Preliminary Report of an Archaeological Survey in Arsanjan Area, Fars Province, Iran, 1977*. Kyoto: Kyoto University.

- Khanipour, Morteza, Habib Emadi and Afshin Akbari
2018 "Hormangan Site. New Evidence for Neolithic Occupations in the Southern Zagros, Iran". *Neo-Lithics* 18:17-23.
- Khanipour, Morteza, Mohammad Amin Mirghaderi, Meisam Nikzad, Habib Emadi and Malihe Tahmasebi
2019 "Settlements and Population Fluctuations of Bavanat River Basin in the Prehistoric Period". *Journal of Archaeological Studies* 1:55-74.
- Langsdorff, Alexander and Donald E. McCown
1942 *Tall-i-Bakun A season of 1932*. Chicago: University of Chicago.
- Miki, Takehiro
2022 *Pottery Making and Communities During the Fifth Millennium BCE in Fars Province, Southwestern Iran*. Oxford: Archaeopress.
- Mortensen, I. D. and Peder Mortensen
1989 "On the Origin of Nomadism in Northern Luristan". *Archaeologia Iranica et Orientalis* 2:929-951.
- Nishiaki, Yoshihiro, Mohammad Hossein Azizi Kharanaghi and Masashi Abe
2013 "The Late Aceramic Neolithic Flaked Stone Assemblage from Tepe Rahmatabad, Fars, South-West Iran". *Iran* LI:1-15.
- Pollock, Susan, Reinhard Bernbeck and Kamyar Abdi (eds.)
2010 *The 2003 Excavations at Tol-e Baši, Iran: Social Life in a Neolithic Village*. Mainz: Philipp von Zabern: Deutsches Archäologisches Institut, Eurasien Abteilung.
- Potts, Daniel T. and Kouros Roustaei
2006 *The Mamasani Archaeological Project Stage One: A report on the first two seasons of the ICAR - University of Sydney expedition to the Mamasani District, Fars Province, Iran*. Tehran: Iranian Center for Archaeological Research
- Renette, Steve and Sirvan Mohammadi Ghasrian
2020 "The central and northern Zagros during the Late Chalcolithic: An updated ceramic chronology based on recent fieldwork results in western Iran". *Paléorient* 46(1-2):109-132.
- Safinejad, Javad
1995 *Iran's Central Tribes*. Tehran: Amir Kabir.
Sami, Ali
1971 *Pasargadae, The oldest Imperial Capital of Iran*. Shiraz: Mousavi Printing Office.
- Sardari, Alireza, H. K. Shahidi, H. Fazeli Nashli, A. Rezaei, A. Hozhabri
2011 "Northern Fars in the Bakun period: archaeological evidence from the Eglyd District", *Archäologische Mitteilungen aus Iran und Turan* 43: 239-260.
- Sardari, Alireza and Mohammad Hossein Taheri
2015 *Report of Archaeological Excavation at Tal-e Mash Karim 2014, Semrom District In Proceedings of the 14th Annual Archaeological Symposium of Iran*. H. Chobak (ed.), Pp. 242-245. Tehran: The Research Institute for Cultural Heritage and Tourism.
- Sarkhoush, A.
2021 "Discovering new evidence of Bakun culture in south of Fars, based on excavations in Tomb-e Bahreh". In Nokandeh, J., Dashtizadeh, A., and Ghafoori O. (eds.), pp. 87-104, *The Persian Gulf, an Archaeological Perspective*. Tehran, National Museum of Tehran. (in Farsi)
- Schmidt, Erich Friedrich
1937 "Tol-e-Bakun: Prehistoric Mound near Persepolis". *Museum Bulletin* VII(1):27-29.
- Shahbazi, Abdollah
1987 *The Forgotten Tribe: A Study of the Sorkhi Tribe of Fars Province*. Tehran: Ney.
- Shirazi, Rouholla, Ali Asghar Norouzi, Mohsen Heidary and Khosrow Ahmadi Khoei
2015 *New evidence of Chalcolithic nomadic campsites in the highland Zagros, Iran: Saki Abad*. <http://antiquity.ac.uk/projgall/shirazi> 344.
- Stein, Sir Aurel
1936 "An Archaeological Tour in the Ancient Persis". *Iraq* 3:111-225.
- 1937 *Archaeological Reconnaissances in North-Western India and South-Eastern Iran*. London: Macmillan and Co.
- Sumner, William M.
1972 *Cultural Development in the Kur River Basin, Iran: An Archaeological Analysis of Settlement Patterns PhD diss.*, Department of Anthropology, University of Pennsylvania.
- 1977 "Early Settlements in Fars Province, Iran". In *Mountains and lowlands: essays in the archaeology of greater Mesopotamia*. L.D. Levine and T.C. Young (eds.), Pp. 291-305. Bibliotheca mesopotamica. Malibu: Undena.
- 1994 "The Evolution of Tribal Society in Southern Zagros Mountains, Iran". In *Chiefdoms and Early States in the Near East: The Organizational Dynamics of Complexity*. G. Stein and M.S. Rothman (eds.), Pp. 47-65. Madison: Prehistory Press.
- 2003 *Early Urban Life in the Land of Anshan Excavations at Tal-e Malyan in the Highlands of Iran*. Philadelphia: University of Pennsylvania Museum of Archaeology and Anthropology.

- Taheri, M. H.
2023 “Ghabr-e Keykha River Basin in the Prehistoric Period, Settlements and Population Fluctuations in the Central Part of Semirom County from the Paleolithic Period to the Banesh Period”. *Motaleat-e Bastanshenasi-e Parseh (MBP)*, Vol. 7, No. 23: 7-37. (in Farsi)
- Tonoike, Yukiko
2009 *Beyond style: Petrographic analysis of Dalma ceramics in two regions of Iran*, Yale University.
- Tsuneki, Akira, Mohsen Zeidi and Katsuhiko Ohnuma
2007 “Proto-Neolithic Caves in the Bolaghi Valley, south Iran”. *Iran* 45:1-22.
- Tsuneki, Akira and Mohsen Zeidi
2008 *Tang-e Bolaghi: the Iran-Japan archaeological project for the Sivand Dam salvage area*. Tsukuba/Tehran: University of Tsukuba/Iranian Center for Archaeological Research.
- Vanden Berghe, Louis
1952 “Archeologische Opzoekingen in de Marv Dasht Vlake (Iran)”. *Jaarbericht Ex Oriente Lux* 12:211-220.
- 1954 “Archeologische Navorsingen in de Omstreken van Persepolis”. *Jaarbericht Ex Oriente Lux* 13:394-408.
- Vidale, Massimo, Hassan Fazeli Nashli and François Desset
2018 “The late prehistory of the northern Iranian-Central Plateau (c. 6000–3000 BC): growth and collapse of decentralised networks”. *Tagungen des Landesmuseums für Vorgeschichte Halle* 18:1-43.
- Voigt, Mary M. and Robert H. Dyson
1992 “The Chronology of Iran, ca. 8000-2000 B.C.”, In *Chronologies in Old World Archaeology*. R.W. Ehrich (ed.), Pp. 122-178. Chicago and London: The University of Chicago.
- Wong, Edna H. Y.
2008 *Ceramic Characterization and Inter-site Relationships in the Northwestern Central Plateau, Iran, in the Late Neolithic to the Bronze Age*, University of Sydney.
- Yamauchi, Kazuya and Shinichi Nishiyama
2008 “Archaeological Survey in the Bolaghi Valley and its Vicinity”. In *Tang-e Bolaghi, The Iran-Japan Archaeological Project for the Sivand Dam Salvage Area*. A. Tsuneki and M. Zeidi (eds.), Pp. 169-252. Tsukuba/Tehran: University of Tsukuba/Iranian Center for Archaeological Research.
- Zagarell, Allen
1982 *The prehistory of the Northeast Baḥtīyārī Mountains, Iran: the rise of a highland way of life*. Wiesbaden: Ludwig Reichert.
- Zeidi, Mohsen
2017 “Recent discoveries of ancient sites of Fifth millennium B.C. at Tangi-Bulaghi and the plain of Pasargadae”. In *Pasargadae2, A Corpus of Research Articles of the Archaeology, Restoration, Preservation, Architecture, Geology, Anthropology and Tourism subjects of Pasargadae World Heritage Site*. M.H. Talebian and H. Fadaei (eds.), Pp. 31-40. Pasargadae: Pasargadae world heritage site and Bahar Book.
- Zeidi, Mohsen, Saman Hamzavi Zarghani and Nicholas J. Conard
2016 “Tang-e Khiareh: A Newly Discovered Neolithic Site in the Kur River Basin of Fars Province, Iran”. In *The Neolithic of the Iranian Plateau Recent Research*. K. Roustaei and M. Mashkour (eds.), Pp. 217-225. Berlin: Ex Oriente.